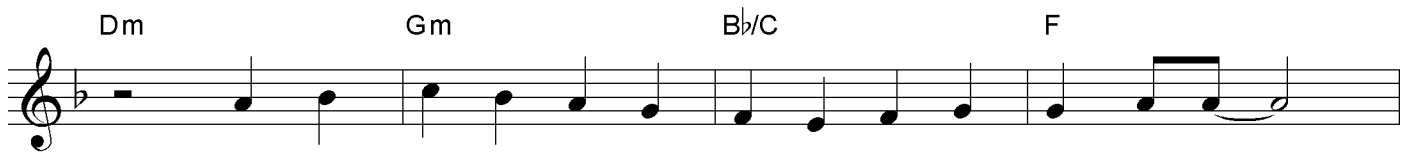


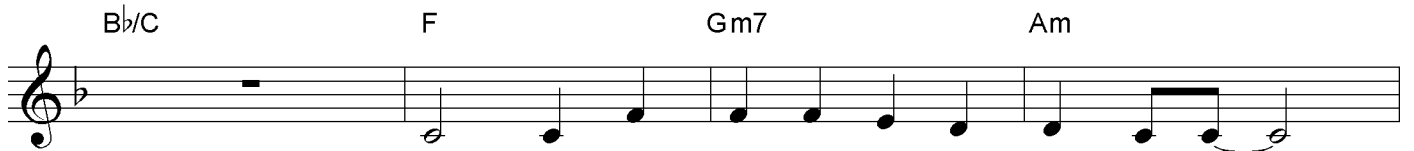
前へ



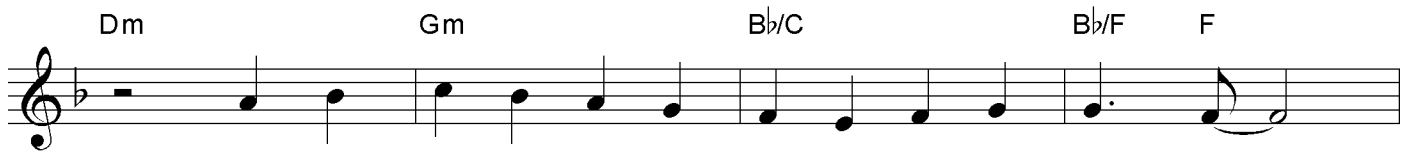
うしろをふりむくなとー



イエスさまがかたっておられるー



かこといまをくらべてー



うごけなくならないようにー



F C/E Dm G C

うしろ - をみていても - かえられ - ない

F C/E Dm G Gm7/C

- これか - らのことは - かえてゆ - ける

C Eb C F Gm7

- まえへ - まえへ - まえへ

F/A Bb Am Dm

すすん - でゆ - こう なみだ - する - ときこ

Gm Eb C F Gm7

そ主をみあげ - まえへ - まえへ - まえへ

F/A Bb Am Dm

すすん - でゆ - こう なみだ - はか - ぜにふ

Gm7 Bb/C To Coda 1. F Gm7

かれて - かんしゃになる -

F/A Bbm C 2. F

F/E $\flat$  B $\flat$ /D B $\flat$ m/D $\flat$

F/C G/B Gm Am B $\flat$  C

D.S. al Coda  
うしろ

**⊕ Coda**

F Gm7 F/A B $\flat$

ま え へ ま え へ す す ん で ゆ こう

Am Dm Gm E $\flat$  C

な み だ す る と き こ そ 主 を み あ げ ま え へ

F Gm7 F/A B $\flat$

ま え へ ま え へ す す ん で ゆ こう

Am Dm Gm B $\flat$ /C

な み だ は か ぜ に ふ か れ て か ん しゃ に な る

F Gm7 F/A B $\flat$

ま え へ

F Gm7 F/A B $\flat$

ま え へ ま え へ

F Gm7 F/A B♭

— ま え へ — — — ま え へ

Detailed description: This is the first line of a musical score. It features a treble clef and a key signature of one flat (B-flat). The staff contains a sequence of notes: a quarter rest, a quarter note G4, a quarter note A4, a quarter note B4, a quarter note C5, a quarter note B4, a quarter note A4, and a quarter note G4. Above the staff, the chords F, Gm7, F/A, and B♭ are indicated. Below the staff, the lyrics 'まえへ' are written under the notes, with a long horizontal line extending across the first two measures.

F Gm7 F/A B♭

— ま え へ —

Detailed description: This is the second line of the musical score. It continues the melody from the first line. The notes are: a quarter note G4, a quarter note A4, a quarter note B4, a quarter note C5, a quarter note B4, a quarter note A4, and a quarter note G4. Above the staff, the chords F, Gm7, F/A, and B♭ are indicated. Below the staff, the lyrics 'まえへ' are written under the notes, with a long horizontal line extending across the first two measures.

F

Detailed description: This is the third line of the musical score. It consists of a single treble clef staff with a whole rest in the first measure, indicating a full-measure rest.